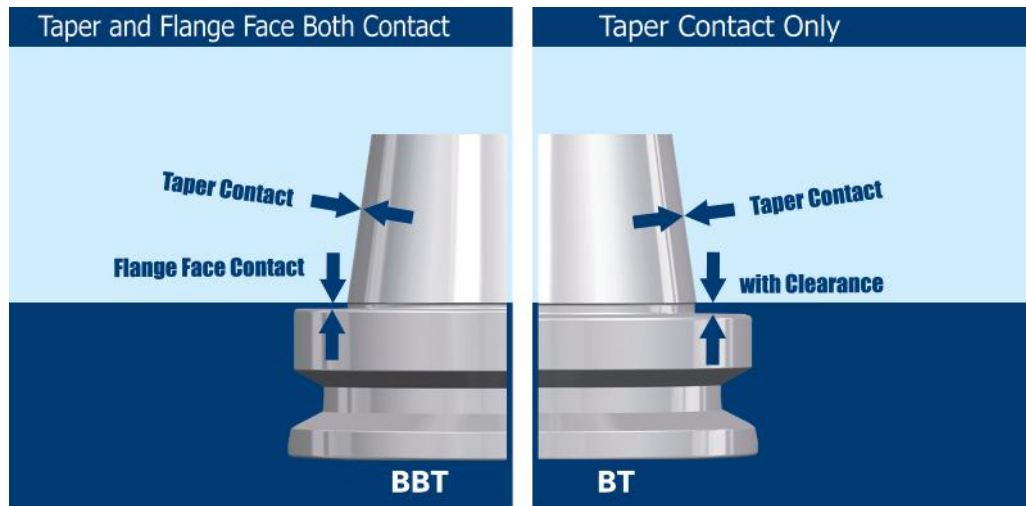


TOOL HOLDERS
BBT
BT

BBT DualDrive (Double Contact) Tool Holders

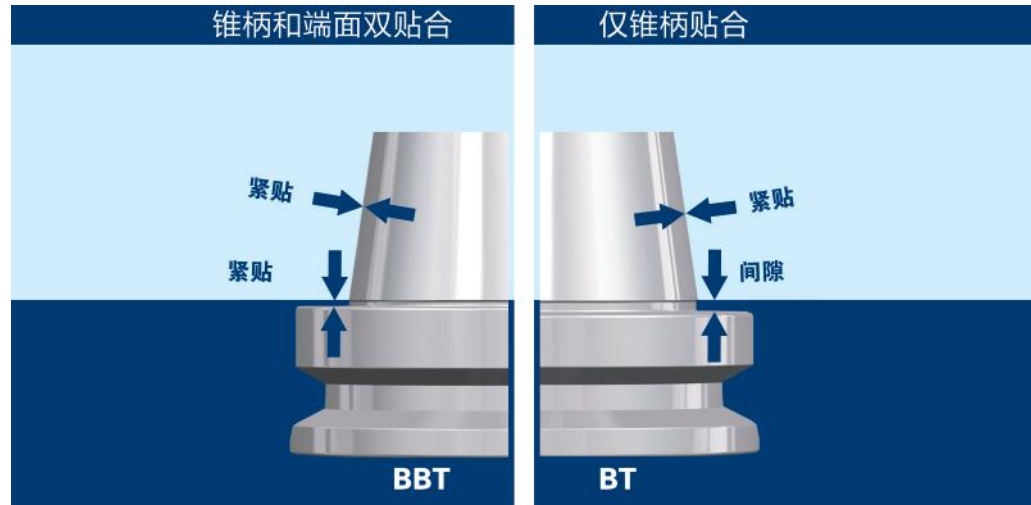


BBT Advantages:

- * Improve tool holder stability when high speed working.
- * Improve workpiece surface finish.
- * Improve working dimension accuracy.
- * Improve ATC repeatability.
- * Improve the roundness when boring operation.
- * Extend cutting tool life.

ORDER SPECIFICATION:
PLEASE CHANGE BT SIZES TO BBT ACCORDINGLY.
PLEASE ORDER BBT SPINDLE FOR BETTER PERFORMANCE.

BBT 双接触刀柄



使用 BBT 双接触刀柄优势：

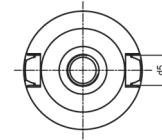
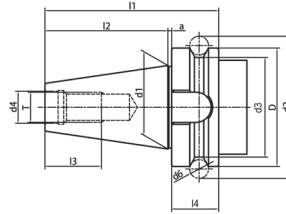
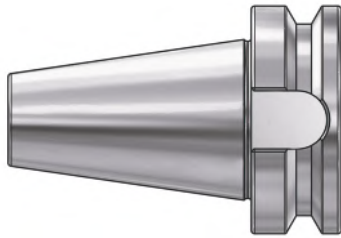
- * 高速加工时提高刀柄稳定性；
- * 提高工件表面光洁度；
- * 提高加工精度；
- * 提高 ATC 的重复精度；
- * 提高镗孔加工圆度；
- * 增加刀具使用寿命。

订购说明：

请把 BT 刀柄型号里的 BT 改为 BBT 即可；
为了更好的使用效果，请订购带 BBT 主轴的加工中心。

BT Taper Standard

BT 锥柄标准



Size	D	d1	d2	d3	d4	d5	d6	l1	l2	l3	l4	d	T
BT30	46	31.75	56.144	38	12.5	16.1	8	70.4	48.4	24	20	2	M12*1.75
BT40	63	44.45	75.679	53	17	16.	10	92.4	65.4	30	25	2	M16*2.0
BT50	100	69.85	119.019	85	25	25.7	15	139.8	101.8	45	35	3	M24*3.0

Taper standard: JIS B 6339

Material: Alloyed case hardened steel

Surface Treatment: Blackening and Bright

Taper tolerance: <AT3

Hardness: HRC 56-60

Carbon depth: 0.8±0.2mm

Surface Roughness: Ra<0.005mm

Balancing: G6.3/15000; G2.5/25000

Cooling: AD; AD/B can be made by request.

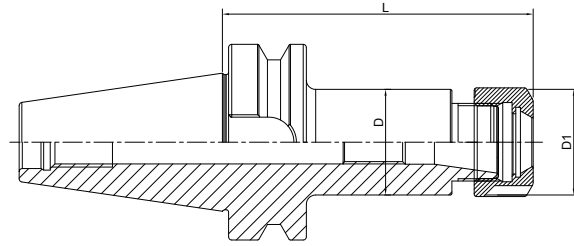
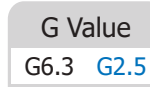
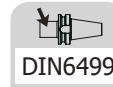
BT & BBT TOOLING SYSTEM

BT 工具系统

ER Collet Chuck.....	A.06
ER 弹簧夹头刀柄.....	A.06
GER Collet Chuck	A.10
GER 弹簧夹头刀柄.....	A.10
Power Milling Chuck	A.11
强力铣刀柄	A.11
OZ Collet Chuck.....	A.13
OZ 夹头刀柄.....	A.13
SKS Collet Chuck.....	A.14
SKS 高速筒夹刀柄.....	A.14
TG Collet Chuck	A.15
TG 超强力刀柄	A.15
Precision Screw Collet Chuck	A.16
NDC 后拉刀柄.....	A.16
Face Mill Holder.....	A.18
面铣刀柄.....	A.18
Combi Shell Mill Holder.....	A.21
混合插入式铣刀柄.....	A.21
Side Cutter Arbor	A.23
侧铣刀柄.....	A.23
End Mill Holder.....	A.25
侧固刀柄.....	A.25
Morse Taper Adapter.....	A.30
带扁尾莫氏刀柄.....	A.30
Morse Taper Adapter.....	A.31
带螺纹孔莫氏刀柄	A.31
Tool Holder Adapter Sleeve	A.32
转换刀柄.....	A.32
Drill Chuck Adapter.....	A.34
钻接杆	A.34
APU Drill Chuck Holder	A.35
APU 钻夹头刀柄.....	A.35
Precision Drill Chuck Holder.....	A.36
精密钻夹头刀柄	A.36
Quick Change Tapping Chuck.....	A.37
弹性快换攻丝刀柄	A.37
Screw-in Milling Cutter Holder.....	A.38
SOM 锁牙刀柄.....	A.38
Runout Adjustable Flange Adapter	A.41
可调节精度法兰刀柄	A.41
UM Adjustable.....	A.42
UM调零刀柄	A.42
Boring Bar Blank.....	A.43
基础柄	A.43
Test Arbor.....	A.44
主轴检测棒.....	A.44
Alignment Tool for ATC Arm	A.45
调整机械手用组合模具.....	A.45



ER Collet Chuck with UM Nut ER 弹簧夹头刀柄



Size	D	D1	L	Capacity
BT30-ER16UM-70	28	32	70	1-10
BT30-ER20UM-70	34	35	70	1-13
BT30-ER25-70	42	42	70	2-16
BT30-ER32-70	40	50	70	2-20
BT30-ER40-70	50	63	70	3-26
BT30-ER16UM-100	28	32	100	1-10
BT30-ER20UM-100	34	35	100	1-13
BT30-ER25-100	42	42	100	2-16
BT30-ER32-100	40	50	100	2-20
BT40-ER16UM-70	28	32	70	1-10
BT40-ER20UM-70	34	35	70	1-13
BT40-ER25-70	42	42	70	2-16
BT40-ER32-70	50	50	70	2-20
BT40-ER40-80	50	63	80	3-26
BT40-ER16UM-100	28	32	100	1-10
BT40-ER20UM-100	34	35	100	1-13
BT40-ER25-100	42	42	100	2-16
BT40-ER32-100	50	50	100	2-20
BT40-ER40-100	50	63	100	3-26
BT40-ER16UM-160	28	32	160	1-10
BT40-ER20UM-160	34	35	160	1-13
BT40-ER25-160	42	42	160	2-16
BT40-ER32-160	50	50	160	2-20
BT40-ER40-160	50	63	160	3-26
BT40-ER16UM-200	28	32	200	1-10
BT40-ER20UM-200	34	35	200	1-13
BT40-ER25-200	42	42	200	2-16
BT40-ER32-200	50	50	200	2-20
BT40-ER40-200	50	63	200	3-26



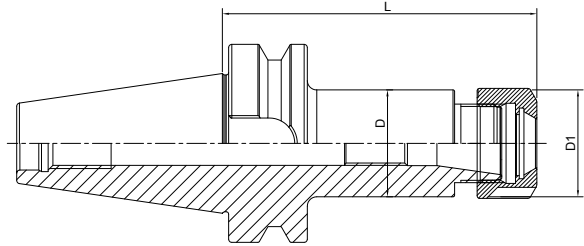
ER Collet Chuck with UM Nut
ER 弹簧夹头刀柄

DIN6499

A ↗
≤0.003

G Value
G6.3
G2.5

AD AD/B

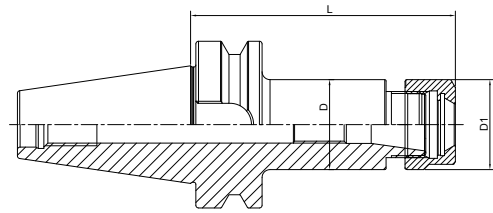
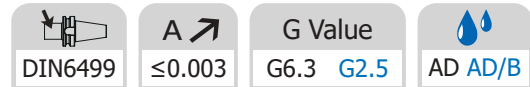


Size	D	D1	L	Capacity
BT50-ER16UM-70	28	32	70	1-10
BT50-ER20UM-70	34	35	70	1-13
BT50-ER25-70	42	42	70	2-16
BT50-ER32-70	40	50	70	2-20
BT50-ER40-80	63	63	80	3-26
BT50-ER50-100	64	78	100	6-34
BT50-ER16UM-100	28	32	100	1-10
BT50-ER20UM-100	34	35	100	1-13
BT50-ER25-100	42	42	100	2-16
BT50-ER32-100	50	50	100	2-20
BT50-ER40-100	63	63	100	3-26
BT50-ER16UM-160	28	32	160	1-10
BT50-ER20UM-160	34	35	160	1-13
BT50-ER25-160	42	42	160	2-16
BT50-ER32-160	50	50	160	2-20
BT50-ER40-160	63	63	160	3-26
BT50-ER16UM-200	28	32	200	1-10
BT50-ER20UM-200	34	35	200	1-13
BT50-ER25-200	42	42	200	2-16
BT50-ER32-200	50	50	200	2-20
BT50-ER40-200	63	63	200	3-26
BT50-ER25-250	42	42	250	2-16
BT50-ER32-250	50	50	250	2-20
BT50-ER40-250	63	63	250	3-26
BT50-ER25-300	42	42	300	2-16
BT50-ER32-300	50	50	300	2-20
BT50-ER40-300	63	63	300	3-26



ER Collet Chuck with Hex Nut

ER 弹簧夹头刀柄



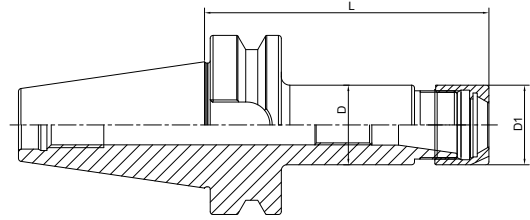
Size	D	D1	L	Capacity
BT30-ER16A-70	28	28	70	1-10
BT30-ER20A-70	34	34	70	1-13
BT30-ER16A-100	28	28	100	1-10
BT30-ER20A-100	34	34	100	1-13
BT40-ER16A-70	28	28	70	1-10
BT40-ER20A-70	34	34	70	1-13
BT40-ER16A-100	28	28	100	1-10
BT40-ER20A-100	34	34	100	1-13
BT40-ER16A-160	28	28	160	1-10
BT40-ER20A-160	34	34	160	1-13
BT40-ER16A-200T	28	28	200	1-10
BT40-ER20A-200	34	34	200	1-13
BT50-ER16A-70	28	28	70	1-10
BT50-ER20A-70	34	34	70	1-13
BT50-ER16A-100	28	28	100	1-10
BT50-ER20A-100	34	34	100	1-13
BT50-ER16A-160	28	28	160	1-10
BT50-ER20A-160	34	34	160	1-13
BT50-ER16A-200T	28	28	200	1-10
BT50-ER20A-200	34	34	200	1-13

T refers to cutter side with taper design
T 代表刀具端锥柄设计



ER Collet Chuck with Mini Nut
ER 弹簧夹头刀柄

DIN6499	A ≤ 0.003	G Value G6.3 G2.5	AD AD/B
---------	----------------	----------------------	---------

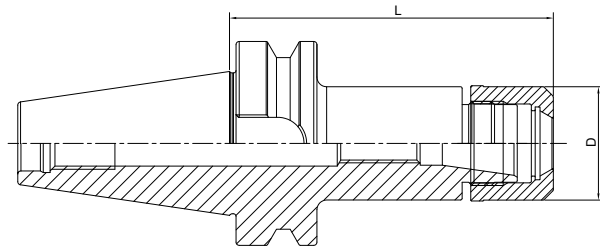
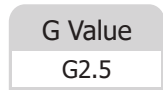


Size	D	D1	L	Capacity
BT30-ER11M-70	16	16	70	1-7
BT30-ER16M-70	22	22	70	1-10
BT40-ER11M-70	16	16	70	1-7
BT40-ER16M-70	22	22	70	1-10
BT40-ER20M-70	28	28	70	1-13
BT40-ER25M-70	35	35	70	2-16
BT40-ER11M-100	16	16	100	1-7
BT40-ER16M-100	22	22	100	1-10
BT40-ER20M-100	28	28	100	1-13
BT40-ER25M-100	35	35	100	2-16
BT40-ER11M-160T	16	16	160	1-7
BT40-ER16M-160T	22	22	160	1-10
BT40-ER20M-160	28	28	160	1-13
BT40-ER25M-160	35	35	160	2-16
BT50-ER16M-100	22	22	100	1-10
BT50-ER20M-100	28	28	100	1-13
BT50-ER25M-100	35	35	100	2-16
BT50-ER16M-160T	22	22	160	1-10
BT50-ER20M-160	28	28	160	1-13
BT50-ER25M-160	35	35	160	2-16

T refers to cutter side with taper design
T 代表刀具端锥柄设计



ER Collet Chuck with GER Nut ER 弹簧夹头刀柄



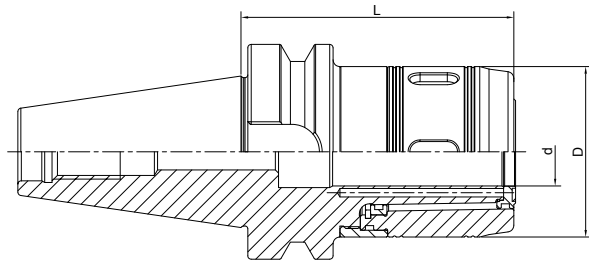
Size	D1	L	Capacity
BT30-GER16-70	30	70	1-10
BT30-GER20-70	35	70	1-13
BT30-GER25-70	40	70	2-16
BT30-GER32-70	48	70	2-20
BT40-GER16-70	30	70	1-10
BT40-GER20-70	35	70	1-13
BT40-GER25-70	40	70	2-16
BT40-GER32-70	48	70	2-20
BT40-GER16-100	30	100	1-10
BT40-GER20-100	35	100	1-13
BT40-GER25-100	40	100	2-16
BT40-GER32-100	48	100	2-20
BT50-GER16-100	30	100	1-10
BT50-GER20-100	35	100	1-13
BT50-GER25-100	40	100	2-16
BT50-GER32-100	48	100	2-20



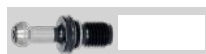
Power Milling Chuck
强力铣刀柄



A ↗ ≤0.008	G Value G6.3	AD
---------------	-----------------	----



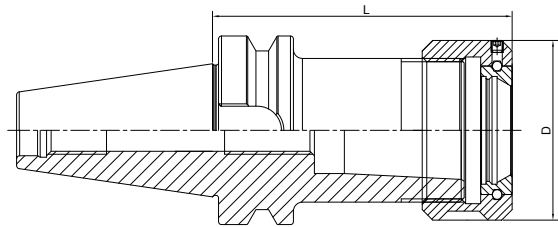
Size	d	D	L	Capacity
BT30-HC20-80	20	50	80	3-16; 20
BT30-HC25-90	25	59	90	3-20; 25
BT30-HC32-110	32	72	110	3-25; 32
BT40-HC20-90	20	50	90	3-16; 20
BT40-HC25-100	25	59	100	3-20; 25
BT40-HC32-90	32	72	90	3-25; 32
BT40-HC32-105	32	72	105	3-25; 32
BT40-HC32-165	32	72	165	3-25; 32
BT40-HC42-130	42	99	130	3-32; 42
BT50-HC20-105	20	50	105	3-16; 20
BT50-HC25-105	25	59	105	3-20; 25
BT50-HC32-110	32	72	110	3-25; 32
BT50-HC42-110	42	99	110	3-32; 42
BT50-HC32-165	32	72	165	3-25; 32
BT50-HC32-200	32	72	200	3-25; 32
BT50-HC32-250	32	72	250	3-25; 32
BT50-HC32-300	32	72	300	3-25; 32



OZ Collet Chuck
OZ 夹头刀柄



DIN6391	A ≤ 0.005	G Value G6.3	AD
---------	----------------	--------------	----

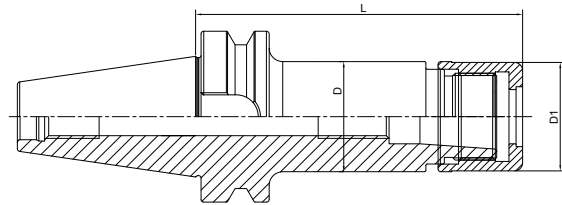


Size	D	L	Capacity
BT30-OZ16-70	43	70	3-16
BT30-OZ25-80	60	80	3-25
BT40-OZ16-70	43	70	3-16
BT40-OZ25-70	60	70	3-25
BT40-OZ32-80	72	80	6-32
BT50-OZ25-85	60	85	3-25
BT50-OZ32-90	72	90	6-32



High Speed SKS Collet Chuck SKS 高速筒夹刀柄

A ↗ ≤0.003	G Value G2.5	AD
---------------	-----------------	----

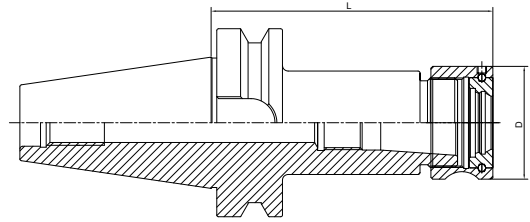


Size	D	D1	L	Capacity	M
BT30-SKS10-60	27.5	27.1	60	2-10	M21.5*1
BT30-SKS16-60	40.6	40	60	3-16	M32*1.5
BT30-SKS10-90	27.5	27.1	90	2-10	M21.5*1
BT30-SKS16-90	40.6	40	90	3-16	M32*1.5
BT40-SKS10-60	27.5	27.1	60	2-10	M21.5*1
BT40-SKS16-70	40.6	40	70	3-16	M32*1.5
BT40-SKS10-90	27.5	27.1	90	2-10	M21.5*1
BT40-SKS16-90	40.6	40	90	3-16	M32*1.5
BT40-SKS20-90	48.5	48	90	2-20	M40*1
BT40-SKS25-90	55.6	55	90	6-25	M45*1.5
BT40-SKS10-120	27.5	27.1	120	2-10	M21.5*1
BT40-SKS16-120	40.6	40	120	3-16	M32*1.5
BT40-SKS20-120	48.5	48	120	2-20	M40*1
BT40-SKS25-120	55.6	55	120	6-25	M45*1.5
BT50-SK10-100	27.5	27.1	100	2-10	M21.5*1
BT50-SK16-100	40.6	40	100	3-16	M32*1.5
BT50-SKS10-120	27.5	27.1	120	2-10	M21.5*1
BT50-SKS16-120	40.6	40	120	3-16	M32*1.5
BT50-SKS10-165	27.5	27.1	165	2-10	M21.5*1
BT50-SKS16-165	40.6	40	165	3-16	M32*1.5



TG Collet Chuck
TG 超強力刀柄

A ↗ ≤0.005	G Value G6.3	AD
---------------	-----------------	----

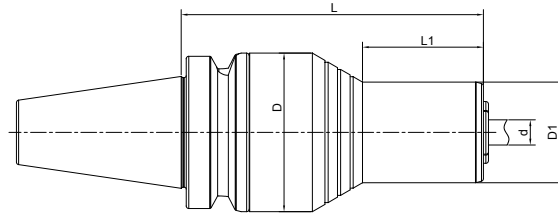


Size	D	L	Collet	Capacity
BT30-TG75-70	50	70	TG 75	2-20
BT30-TG75-100	50	100	TG 75	2-20
BT30-TG100-100	60	100	TG 100	3-25
BT40-TG75-70	50	70	TG 75	2-20
BT40-TG100-80	60	80	TG 100	3-25
BT40-TG100-100	60	100	TG 100	3-25
BT40-TG100-150	60	150	TG 100	3-25
BT50-TG100-90	60	90	TG 100	3-25
BT50-TG100-150	60	150	TG 100	3-25



Precision Screw Collet Chuck NDC 后拉刀柄

A ↗ ≤0.003	G Value G6.3	AD
---------------	-----------------	----

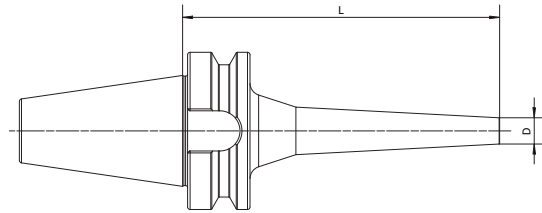


Size	L	L1	D	D1	Capacity
BT30-NDC20-100	100	20	53	40	3-20
BT40-NDC20-75	75	15	63	40	3-20
BT40-NDC20-120	120	48	63	40	3-20
BT40-NDC20-156	156	84	63	40	3-20
BT40-NDC25-122	122	-	63	-	16-32
BT40-NDC32-125	125	-	63	-	16-32
BT50-NDC20-86	86	15	63	40	3-20
BT50-NDC20-131	131	45	63	40	3-20
BT50-NDC20-167	167	48	63	40	3-20
BT50-NDC25-133	133	-	70	-	16-32
BT50-NDC32-136	136	-	70	-	16-32



Pull Back Collet Chuck
DC 后拉刀柄

A ↗ ≤0.003	G Value G6.3	AD
---------------	-----------------	----

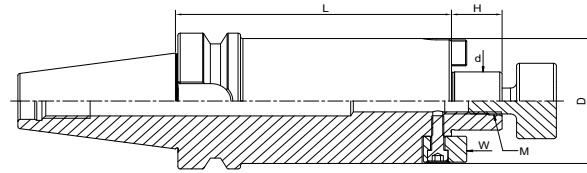


Size	L	D	Capacity
BT30-DC06-60	60	14	1-6
BT30-DC06-90	90	14	1-6
BT30-DC06-120	120	14	1-6
BT30-DC08-60	60	22	1-10
BT30-DC08-90	90	22	1-10
BT30-DC08-120	120	22	1-10
BT30-DC12-80	80	34	1-12
BT40-DC06-60	60	14	1-6
BT40-DC06-90	90	14	1-6
BT40-DC06-120	120	14	1-6
BT40-DC06-150	150	14	1-6
BT40-DC08-60	60	22	1-10
BT40-DC08-90	90	22	1-10
BT40-DC08-120	120	22	1-10
BT40-DC08-150	150	22	1-10
BT40-DC08-200	200	22	1-10
BT40-DC12-90	90	34	1-12
BT40-DC12-120	120	34	1-12
BT40-DC12-150	150	34	1-12
BT40-DC12-200	200	34	1-12
BT50-DC06-120	120	14	1-6
BT50-DC06-150	150	14	1-6
BT50-DC08-120	120	22	1-10
BT50-DC08-150	150	22	1-10
BT50-DC08-200	200	22	1-10
BT50-DC12-120	120	34	1-12
BT50-DC12-150	150	34	1-12
BT50-DC12-200	200	34	1-12



Face Mill Holder Inch 英制面铣刀柄

A ↗ ≤0.005	G Value G6.3 G2.5	AD AD/B
---------------	----------------------	---------

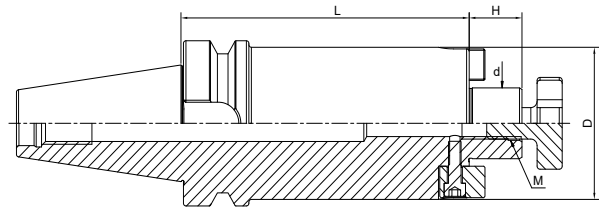


Size	d	L	D	H	M
BT40-FMA3/4"-40	3/4"	40	42.926	17.45	3/8-24
BT40-FMA1"-40	1"	40	55.626	17.45	1/2-20
BT40-FMA1-1/4"-50	1-1/4"	50	69.85	17.45	5/8-18
BT40-FMA1-1/2"-50	1-1/2"	50	78	23.83	3/4-16
BT40-FMA3/4"-100	3/4"	100	42.926	17.45	3/8-24
BT40-FMA1"-100	1"	100	55.626	17.45	1/2-20
BT40-FMA1-1/4"-100	1-1/4"	100	69.85	17.45	5/8-18
BT40-FMA1-1/2"-100	1-1/2"	100	78	23.83	3/4-16
BT40-FMA3/4"-150	3/4"	150	42.926	17.45	3/8-24
BT40-FMA1"-150	1"	150	55.626	17.45	1/2-20
BT40-FMA1-1/4"-150	1-1/4"	150	69.85	17.45	5/8-18
BT40-FMA1-1/2"-150	1-1/2"	150	78	23.83	3/4-16
BT50-FMA3/4"-40	3/4"	40	42.926	17.45	3/8-24
BT50-FMA1"-40	1"	40	55.626	17.45	1/2-20
BT50-FMA1-1/4"-50	1-1/4"	50	69.85	17.45	5/8-18
BT50-FMA1-1/2"-50	1-1/2"	50	78	23.83	3/4-16
BT50-FMA3/4"-100	3/4"	100	42.926	17.45	3/8-24
BT50-FMA1"-100	1"	100	55.626	17.45	1/2-20
BT50-FMA1-1/4"-100	1-1/4"	100	69.85	17.45	5/8-18
BT50-FMA1-1/2"-100	1-1/2"	100	78	23.83	3/4-16
BT50-FMA3/4"-150	3/4"	150	42.926	17.45	3/8-24
BT50-FMA1"-150	1"	150	55.626	17.45	1/2-20
BT50-FMA1-1/4"-150	1-1/4"	150	69.85	17.45	5/8-18
BT50-FMA1-1/2"-150	1-1/2"	150	78	23.83	3/4-16



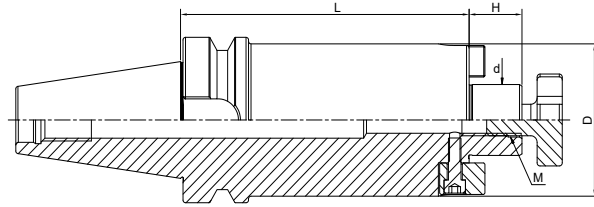
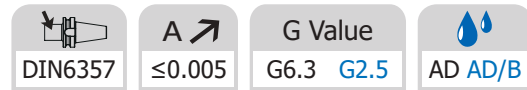
Face Mill Holder
面铣刀柄

DIN6357
 A ≤ 0.005
 G Value G6.3 G2.5
 AD AD/B



Size	d	L	D	H	M
BT30-FMB16-40	16	40	38	17	M8
BT30-FMB22-40	22	40	48	19	M10
BT30-FMB27-40	27	40	58	21	M12
BT30-FMB32-50	32	50	78	24	M16
BT40-FMB16-40	16	40	38	17	M8
BT40-FMB22-40	22	40	48	19	M10
BT40-FMB27-40	27	40	58	21	M12
BT40-FMB32-50	32	50	78	24	M16
BT40-FMB40-50	40	50	88	27	M20
BT40-FMB22-60	22	60	48	19	M10
BT40-FMB27-60	27	60	58	21	M12
BT40-FMB32-60	32	60	78	24	M16
BT40-FMB40-60	40	60	88	27	M20
BT40-FMB16-100	16	100	38	17	M8
BT40-FMB22-100	22	100	48	19	M10
BT40-FMB27-100	27	100	58	21	M12
BT40-FMB32-100	32	100	78	24	M16
BT40-FMB40-100	40	100	88	27	M20
BT40-FMB16-160	16	160	38	17	M8
BT40-FMB22-160	22	160	48	19	M10
BT40-FMB27-160	27	160	58	21	M12
BT40-FMB32-160	32	160	78	24	M16
BT40-FMB40-160	40	160	88	27	M20
BT40-FMB22-200	22	200	48	19	M10
BT40-FMB27-200	27	200	58	21	M12
BT40-FMB32-200	32	200	78	24	M16
BT40-FMB40-200	40	200	88	27	M20
BT40-FMB22-250	22	250	48	19	M10
BT40-FMB22-300	22	300	48	19	M10



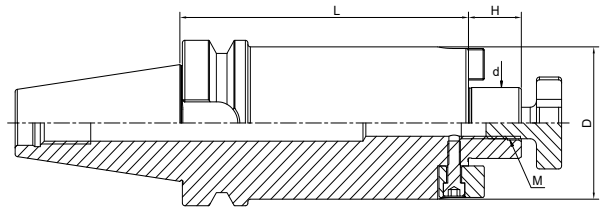
Face Mill Holder
面铣刀柄


Size	d	L	D	H	M
BT50-FMB16-40	16	40	38	17	M8
BT50-FMB22-40	22	40	48	19	M10
BT50-FMB27-40	27	40	58	21	M12
BT50-FMB32-50	32	50	78	24	M16
BT50-FMB40-50	40	50	88	27	M20
BT50-FMB60-75	60	75	129	25	M30
BT50-FMB22-60	22	60	48	19	M10
BT50-FMB27-60	27	60	58	21	M12
BT50-FMB32-60	32	60	78	24	M16
BT50-FMB40-60	40	60	88	27	M20
BT50-FMB16-100	16	100	38	17	M8
BT50-FMB22-100	22	100	48	19	M10
BT50-FMB27-100	27	100	58	21	M12
BT50-FMB32-100	32	100	78	24	M16
BT50-FMB40-100	40	100	88	27	M20
BT50-FMB22-160	22	160	48	19	M10
BT50-FMB27-160	27	160	58	21	M12
BT50-FMB32-160	32	160	78	24	M16
BT50-FMB40-160	40	160	88	27	M20



Face Mill Holder
面铣刀柄

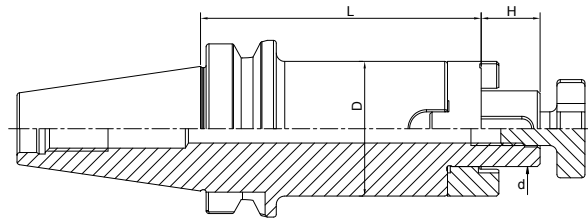
DIN6357	A ≤ 0.005	G Value G6.3 G2.5	AD AD/B
---------	----------------	----------------------	---------



Size	d	L	D	H	M
BT50-FMB22-200	22	200	48	19	M10
BT50-FMB27-200	27	200	58	21	M12
BT50-FMB32-200	32	200	78	24	M16
BT50-FMB40-200	40	200	88	27	M20
BT50-FMB22-250	22	250	48	19	M10
BT50-FMB27-250	27	250	58	21	M12
BT50-FMB32-250	32	250	78	24	M16
BT50-FMB40-250	40	250	88	27	M20
BT50-FMB22-300	22	300	48	19	M10
BT50-FMB27-300	27	300	58	21	M12
BT50-FMB32-300	32	300	78	24	M16
BT50-FMB40-300	40	300	88	27	M20
BT50-FMB22-100(D=60)	22	100	60	19	M10
BT50-FMB22-150/160(D=60)	22	150	60	19	M10
BT50-FMB22-200(D=60)	22	200	60	19	M10
BT50-FMB22-250(D=60)	22	250	60	19	M10
BT50-FMB22-300(D=60)	22	300	60	19	M10



Combi Shell Mill Holder 混合插入式铣刀柄





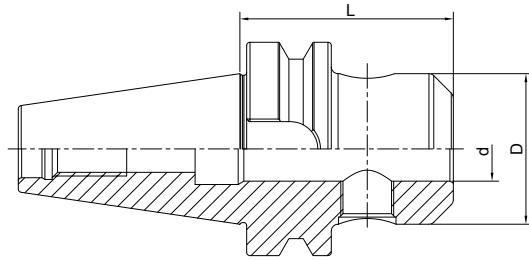
Size	d	D	H	L
BT40-SEMC16-55	16	32	17	55
BT40-SEMC22-55	22	40	19	55
BT40-SEMC27-55	27	48	21	55
BT40-SEMC32-60	32	58	24	60
BT40-SEMC40-60	40	70	27	60
BT40-SEMC16-100	16	32	17	100
BT40-SEMC22-100	22	40	19	100
BT40-SEMC27-100	27	48	21	100
BT40-SEMC32-100	32	58	24	100
BT40-SEMC40-100	40	70	27	100
BT40-SEMC16-160	16	32	17	160
BT40-SEMC22-160	22	40	19	160
BT40-SEMC27-160	27	48	21	160
BT40-SEMC32-160	32	58	24	160
BT40-SEMC40-160	40	70	27	160
BT50-SEMC16-70	16	32	17	70
BT50-SEMC22-70	22	40	19	70
BT50-SEMC27-70	27	48	21	70
BT50-SEMC32-70	32	58	24	70
BT50-SEMC40-70	40	70	27	70
BT50-SEMC16-100	16	32	17	100
BT50-SEMC22-100	22	40	19	100
BT50-SEMC27-100	27	48	21	100
BT50-SEMC32-100	32	58	24	100
BT50-SEMC40-100	40	70	27	100
BT50-SEMC16-160	16	32	17	160
BT50-SEMC22-160	22	40	19	160
BT50-SEMC27-160	27	48	21	160
BT50-SEMC32-160	32	58	24	160
BT50-SEMC40-160	40	70	27	160



End Mill Holder Weldon
侧固刀柄



 DIN6359/1835B	 A ≤0.005	 G Value G6.3 G2.5	 AD AD/B
--	--	---	--

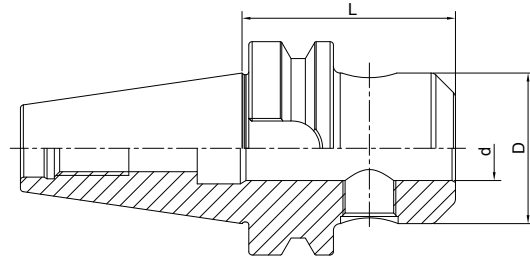


Size	d	D	L
BT30-SLA06-50	6	25	50
BT30-SLA08-50	8	28	50
BT30-SLA10-50	10	35	50
BT30-SLA12-50	12	42	50
BT30-SLA14-50	14	44	50
BT30-SLA16-63	16	48	63
BT30-SLA18-63	18	50	63
BT30-SLA20-63	20	52	63
BT30-SLA25-90	25	65	90
BT40-SLA06-50	6	25	50
BT40-SLA08-50	8	28	50
BT40-SLA10-63	10	35	63
BT40-SLA12-63	12	42	63
BT40-SLA14-63	14	44	63
BT40-SLA16-63	16	48	63
BT40-SLA18-63	18	50	63
BT40-SLA20-63	20	52	63
BT40-SLA25-90	25	65	90
BT40-SLA32-100	32	72	100
BT40-SLA40-120	40	80	120
BT40-SLA06-100	6	25	100
BT40-SLA08-100	8	28	100
BT40-SLA10-100	10	35	100
BT40-SLA12-100	12	42	100
BT40-SLA14-100	14	44	100
BT40-SLA16-100	16	48	100
BT40-SLA18-100	18	50	100
BT40-SLA20-100	20	52	100



End Mill Holder Weldon
侧固刀柄

DIN6359/1835B	A \nearrow ≤ 0.005	G Value G6.3 G2.5	AD AD/B
---------------	------------------------------	----------------------	---------

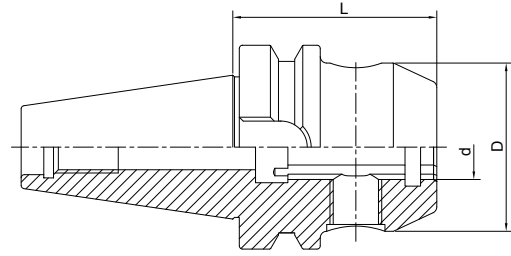


Size	d	D	L
BT40-SLA06-160	6	25	160
BT40-SLA08-160	8	28	160
BT40-SLA10-160	10	35	160
BT40-SLA12-160	12	42	160
BT40-SLA14-160	14	44	160
BT40-SLA16-160	16	48	160
BT40-SLA18-160	18	50	160
BT40-SLA20-160	20	52	160
BT40-SLA25-160	25	65	160
BT40-SLA32-160	32	72	160
BT40-SLA40-160	40	80	160
BT50-SLA06-63	6	25	63
BT50-SLA08-63	8	28	63
BT50-SLA10-63	10	35	63
BT50-SLA12-80	12	42	80
BT50-SLA14-80	14	44	80
BT50-SLA16-80	16	48	80
BT50-SLA18-80	18	50	80
BT50-SLA20-80	20	52	80
BT50-SLA25-100	25	65	100
BT50-SLA32-105	32	72	105
BT50-SLA40-110	40	80	110
BT50-SLA50-125	50	98	125
BT50-SLA06-160	6	25	160
BT50-SLA08-160	8	28	160
BT50-SLA10-160	10	35	160
BT50-SLA12-160	12	42	160
BT50-SLA14-160	14	44	160
BT50-SLA16-160	16	48	160
BT50-SLA18-160	18	50	160
BT50-SLA20-160	20	52	160
BT50-SLA25-160	25	65	160
BT50-SLA32-160	32	72	160
BT50-SLA40-160	40	80	160



End Mill Holder with Coolant Channels
侧固刀柄，端面出水型

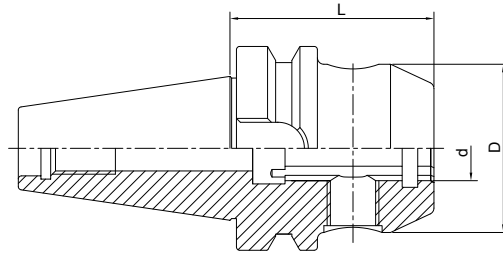
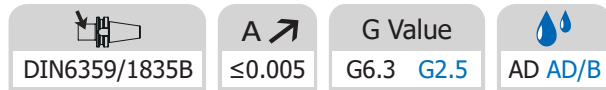
DIN6359/1835B	A \nearrow ≤ 0.005	G Value G6.3 G2.5	AD AD/B
---------------	------------------------------	----------------------	---------



Size	d	D	L
BT40-SLA06-50K	6	25	50
BT40-SLA08-50K	8	28	50
BT40-SLA10-63K	10	35	63
BT40-SLA12-63K	12	42	63
BT40-SLA14-63K	14	44	63
BT40-SLA16-63K	16	48	63
BT40-SLA18-63K	18	50	63
BT40-SLA20-63K	20	52	63
BT40-SLA25-90K	25	65	90
BT40-SLA32-100K	32	72	100
BT40-SLA40-120K	40	80	120
BT40-SLA06-100K	6	25	100
BT40-SLA08-100K	8	28	100
BT40-SLA10-100K	10	35	100
BT40-SLA12-100K	12	42	100
BT40-SLA14-100K	14	44	100
BT40-SLA16-100K	16	48	100
BT40-SLA18-100K	18	50	100
BT40-SLA20-100K	20	52	100



End Mill Holder with Coolant Channels 侧固刀柄，端面出水型

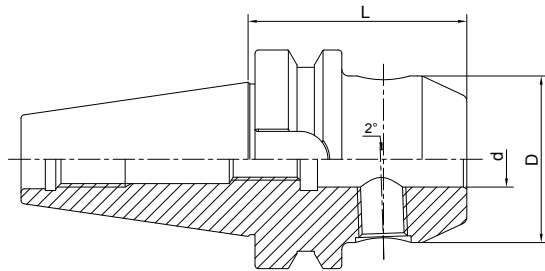


Size	d	D	L
BT50-SLA06-63K	6	25	63
BT50-SLA08-63K	8	28	63
BT50-SLA10-63K	10	35	63
BT50-SLA12-80K	12	42	80
BT50-SLA14-80K	14	44	80
BT50-SLA16-80K	16	48	80
BT50-SLA18-80K	18	50	80
BT50-SLA20-80K	20	52	80
BT50-SLA25-100K	25	65	100
BT50-SLA32-105K	32	72	105
BT50-SLA40-110K	40	80	110
BT50-SLA06-100K	6	25	100
BT50-SLA08-100K	8	28	100
BT50-SLA10-100K	10	35	100
BT50-SLA12-100K	12	42	100
BT50-SLA14-100K	14	44	100
BT50-SLA16-100K	16	48	100
BT50-SLA18-100K	18	50	100
BT50-SLA20-100K	20	52	100



End Mill Holder Whistle Notch
側固式铣刀柄，斜 2 度

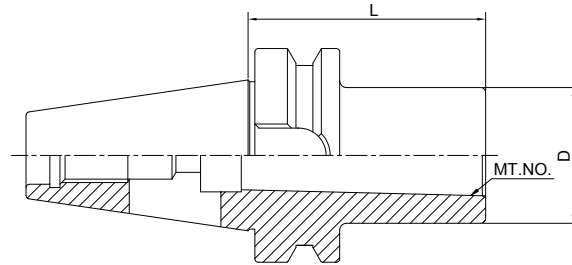
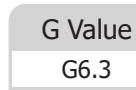
 DIN6359/1835B	 A \nearrow ≤ 0.005	 G Value G6.3 G2.5	 AD AD/B
--	---	---	--



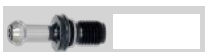
Size	d	D	L
BT40-SLB06-50	6	25	50
BT40-SLB08-50	8	28	50
BT40-SLB10-63	10	35	63
BT40-SLB12-63	12	42	63
BT40-SLB14-63	14	44	63
BT40-SLB16-63	16	48	63
BT40-SLB18-63	18	50	63
BT40-SLB20-63	20	52	63
BT40-SLB25-90	25	65	90
BT40-SLB32-100	32	72	100
BT40-SLB40-120	40	80	120
BT50-SLB06-63	6	25	63
BT50-SLB08-63	8	28	63
BT50-SLB10-63	10	35	63
BT50-SLB12-80	12	42	80
BT50-SLB14-80	14	44	80
BT50-SLB16-80	16	48	80
BT50-SLB18-80	18	50	80
BT50-SLB20-80	20	52	80
BT50-SLB25-100	25	65	100
BT50-SLB32-105	32	72	105
BT50-SLB40-110	40	80	110



Morse Taper Adapter with Tang 带扁尾莫氏刀柄

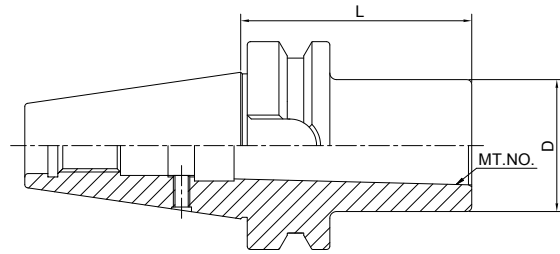


Size	MT.NO.	D	L
BT30-MTA1-45	1	25	45
BT30-MTA2-60	2	32	60
BT30-MTA3-75	3	40	75
BT40-MTA1-50	1	25	50
BT40-MTA2-50	2	32	50
BT40-MTA3-70	3	40	70
BT40-MTA4-95	4	48	95
BT50-MTA1-45	1	25	45
BT50-MTA2-60	2	32	60
BT50-MTA3-65	3	40	65
BT50-MTA3-180	3	40	180
BT50-MTA4-95	4	48	95
BT50-MTA4-180	4	48	180
BT50-MTA5-105	5	63	105



Morse Taper Adapter with Drawbar
带螺纹孔莫氏刀柄

DIN6364	A ≤ 0.005	G Value G6.3	A
---------	----------------	--------------	---



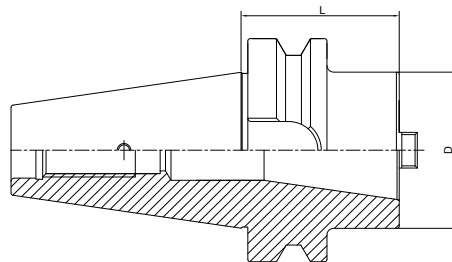
Size	MT.NO.	D	L
BT40-MTB1-50	1	25	50
BT40-MTB2-50	2	32	50
BT40-MTB3-70	3	40	70
BT40-MTB4-95	4	48	95
BT50-MTB1-45	1	25	45
BT50-MTB2-60	2	32	60
BT50-MTB3-65	3	40	65
BT50-MTB4-70	4	48	70
BT50-MTB5-120	5	63	120



Tool Holder Adatper Sleeve 转换刀柄

 A ↗
 ≤0.005

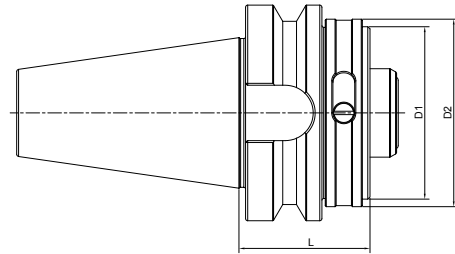
 G Value
 G6.3


 A


Size	D	L
BT40-BT30-60	63	60
BT40-BT40-100	63	100
BT50-BT40-70	70	70
BT50-BT50-120	97	120

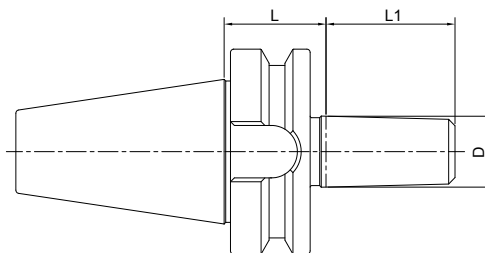
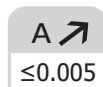
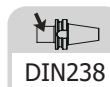


Tool Holder Adatper Sleeve
转换刀柄



Size	D1	D2	L
BT30-HSK32C-40	32	37	40
BT30-HSK40C-40	40	45	40
BT40-HSK32C-40	32	37	40
BT40-HSK40C-40	40	45	40
BT40-HSK50C-50	50	55	50
BT40-HSK63C-70	63	70	70
BT50-HSK32C-50	32	37	50
BT50-HSK40C-50	40	45	50
BT50-HSK50C-60	50	55	60
BT50-HSK63C-60	63	70	60
BT50-HSK80C-60	80	87	60
BT50-HSK100C-90	100	110	90

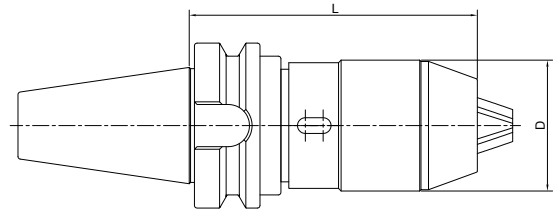
Drill Chuck Adapter 钻接杆



Size	D	L	L1
BT30-B12-25	B12	25	18.5
BT30-B16-25	B16	25	24
BT40-B12-32	B12	32	18.5
BT40-B16-32	B16	32	24
BT40-B18-32	B18	32	32
BT40-B22-32	B22	32	40.5
BT50-B16-45	B16	45	24
BT50-B18-45	B18	45	32
BT50-B22-45	B22	45	40.5



APU Drill Chuck Holder
APU 钻夹头刀柄



Size	D	L	Capacity
BT30-APU08-80	36	80	1-8
BT30-APU13-110	48	110	1-13
BT40-APU08-85	36	85	1-8
BT40-APU13-105	48	105	1-13
BT40-APU16-110	53	110	3-16
BT50-APU08-90	36	90	1-8
BT50-APU13-105	48	105	1-13
BT50-APU16-115	53	115	3-16



Precision Drill Chuck Holder

精密钻夹头刀柄

A ↗

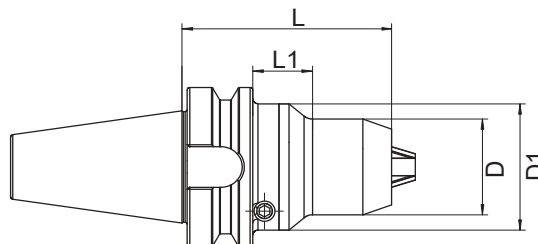
 ≤ 0.03

G Value

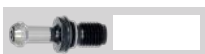
G6.3



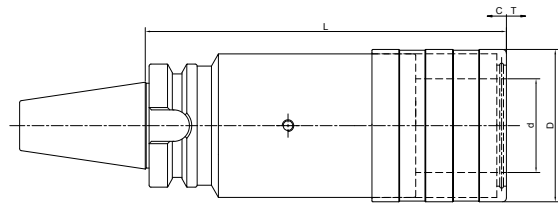
AD



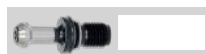
Size	D	D1	L	L1	Capacity
BT30-CPU10-80	38	50	80	26	0.5-10
BT40-CPU10-80	38	50	80	21	0.5-10
BT40-CPU13-90	50	-	90	-	1-13
BT40-CPU16-90	50	-	90	-	1-16
BT50-CPU13-100	50	-	100	-	1-13
BT50-CPU16-100	50	-	100	-	1-16



Quick Change Tapping Chuck with Length Compensation 弹性快换攻丝刀柄



Size	d	D	L	T	C
BT30-TC312-70	19	38	70	7.5	7.5
BT30-TC820-95	31	54	95	12.5	12.5
BT40-TC312-65	19	38	65	7.5	7.5
BT40-TC820-93	31	53	93	12.5	12.5
BT40-TC1433-166	48	78	166	22	22
BT50-TC312-100	19	38	100	7.5	7.5
BT50-TC820-100	31	53	100	12.5	12.5
BT50-TC1433-142	48	78	142	22	22



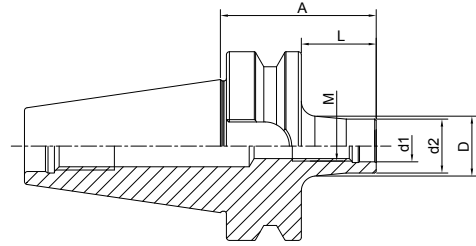
Screw-in Milling Cutter Holder

锁牙刀柄, 锥柄型

A ↗
≤0.005

G Value
G6.3

AD AD/B



Size	M	d1	d2	A	L	D
BT40-SOM08-52 L=25	8	8.5	14.5	52	25	15
BT40-SOM08-77 L=50	8	8.5	14.5	77	50	23
BT40-SOM08-102 L=75	8	8.5	14.5	102	75	23
BT40-SOM08-127 L=100	8	8.5	14.5	127	100	25
BT40-SOM10-32 L=5	10	10.5	18	32	5	18
BT40-SOM10-52 L=25	10	10.5	18	52	25	20
BT40-SOM10-77 L=50	10	10.5	18	77	50	23
BT40-SOM10-102 L=75	10	10.5	18	102	75	28
BT40-SOM10-127 L=100	10	10.5	18	127	100	32
BT40-SOM10-177 L=150	10	10.5	18	177	150	36.5
BT40-SOM12-32 L=5	12	12.5	21	32	5	21
BT40-SOM12-52 L=25	12	12.5	21	52	25	24
BT40-SOM12-77 L=50	12	12.5	21	77	50	24
BT40-SOM12-102 L=75	12	12.5	21	102	75	31
BT40-SOM12-127 L=100	12	12.5	21	127	100	31
BT40-SOM12-152 L=125	12	12.5	21	152	125	36
BT40-SOM12-177 L=150	12	12.5	21	177	150	38
BT40-SOM16-32 L=5	16	17	29	32	5	29
BT40-SOM16-52 L=25	16	17	29	52	25	29
BT40-SOM16-77 L=50	16	17	29	77	50	34
BT40-SOM16-102 L=75	16	17	29	102	75	34
BT40-SOM16-127 L=100	16	17	29	127	100	36
BT40-SOM16-152 L=125	16	17	29	152	125	40
BT40-SOM16-177 L=150	16	17	29	177	150	42.5

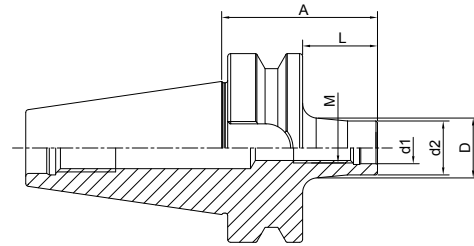


Screw-in Milling Cutter Holder
锁牙刀柄，锥柄型

A ↗
 ≤0.005

G Value
 G6.3

AD AD/B



Size	M	d1	d2	A	L	D
BT50-SOM08-88 L=50	8	8.5	14.5	88	50	23
BT50-SOM08-138 L=100	8	8.5	14.5	138	100	25
BT50-SOM08-188 L=150	8	8.5	14.5	188	150	30
BT50-SOM10-88 L=50	10	10.5	18	88	50	23
BT50-SOM10-138 L=100	10	10.5	18	138	100	32
BT50-SOM10-188 L=150	10	10.5	18	188	150	36.5
BT50-SOM12-88 L=50	12	12.5	21	88	50	24
BT50-SOM12-138 L=100	12	12.5	21	138	100	33
BT50-SOM12-188 L=150	12	12.5	21	188	150	40
BT50-SOM16-88 L=50	16	17	29	88	50	34
BT50-SOM16-138 L=100	16	17	29	138	100	36
BT50-SOM16-188 L=150	16	17	29	188	150	42.5



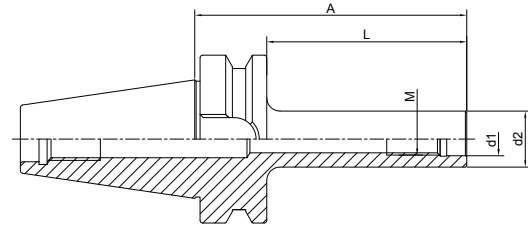
Screw-in Milling Cutter Holder

锁牙刀柄，直柄型

A ↗
≤0.005

G Value
G6.3

AD AD/B

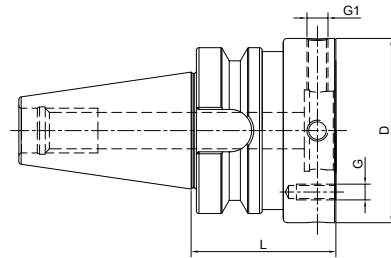


Size	M	d1	d2	A	L
BT40-M10-102 L=75	10	10.5	18	102	75
BT40-M10-127 L=100	10	10.5	18	127	100
BT40-M10-177 L=150	10	10.5	18	177	150
BT40-M12-102 L=75	12	12.5	21	102	75
BT40-M12-127 L=100	12	12.5	21	127	100
BT40-M12-152 L=125	12	12.5	21	152	125
BT40-M12-177 L=150	12	12.5	21	177	150
BT40-M16-102 L=75	16	17	29	102	75
BT40-M16-127 L=100	16	17	29	127	100
BT40-M16-152 L=125	16	17	29	152	125
BT40-M16-177 L=150	16	17	29	177	150
BT50-M10-138 L=100	10	10.5	18	138	100
BT50-M10-188 L=150	10	10.5	18	188	150
BT50-M12-138 L=100	12	12.5	21	138	100
BT50-M12-188 L=150	12	12.5	21	188	150
BT50-M16-138 L=100	16	17	29	138	100
BT50-M16-188 L=150	16	17	29	188	150



Runout Adjustable Flange Adapter 可调节精度法兰刀柄

A ↗ ≤0.002	G Value G6.3 G2.5	AD
---------------	----------------------	----



Size	D	L	G	G1
BT30-MOD060-050	60	50	M5	M8x1
BT30-MOD070-050	70	50	M6	M8x1
BT40-MOD060-050	60	50	M5	M8x1
BT40-MOD070-050	70	50	M6	M8x1
BT40-MOD080-050	80	50	M6	M8x1
BT40-MOD100-070	100	70	M8	M10x1
BT50-MOD060-070	60	70	M5	M8x1
BT50-MOD070-070	70	70	M6	M8x1
BT50-MOD080-070	80	70	M6	M8x1
BT50-MOD100-070	100	70	M8	M10x1
BT50-MOD117-080	117	80	M8	M10x1
BT50-MOD140-080	140	80	M10	M10x1

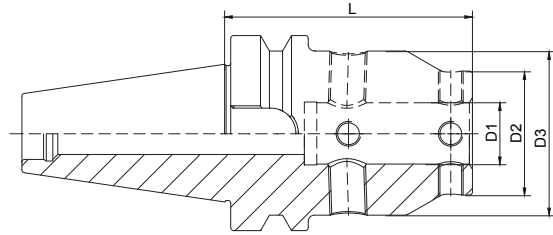


UM Adjustable Tool Holder UM 调零刀柄

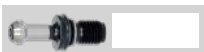
A ↗
≤0.003

G Value
G6.3 G2.5

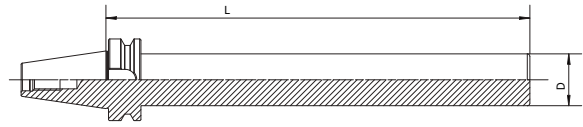
AD AD/B



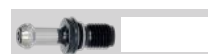
Size	D1	D2	D3	L
BT30-UM12-65	12	28	44.5	65
BT30-UM16-75	16	32	48	75
BT30-UM20-85	20	40	53	85
BT30-UM25-95	25	48	63	95
BT30-UM32-100	32	52	63	100
BT40-UM12-70	12	28	44.5	70
BT40-UM16-70	16	32	48	70
BT40-UM20-80	20	40	53	80
BT40-UM25-100	25	48	63	100
BT40-UM32-95	32	52	63	95
BT50-UM12-80	12	28	44.5	80
BT50-UM16-85	16	32	48	85
BT50-UM20-90	20	40	53	90
BT50-UM25-105	25	48	63	105
BT50-UM32-105	32	52	63	105



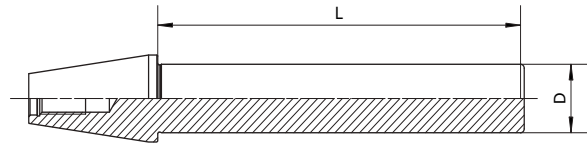
Boring Bar Blank 基础柄



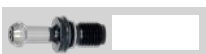
Size	D	L
BT30-D50-160	50	160
BT40-D63-160	63	160
BT40-D63-250	63	250
BT50-D100-160	100	160
BT50-D100-250	100	250



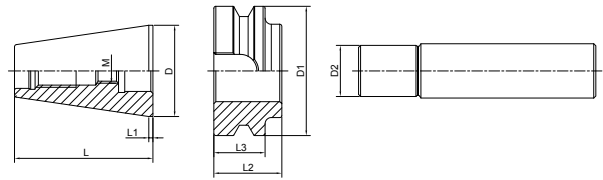
Test Arbor
主轴检测棒

 A ↗
 ≤0.002


Size	D	L
BT30-32-300	32	300
BT40-40-300	40	300
BT50-50-300	50	300



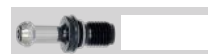
Alignment Tool for ATC Arm 调整机械手用组合模具



Size	D	D1	D2	L	L1	L2
BT30-ATC-18D	31.75	46	18	50.4	2	20
BT40-ATC-20D	44.45	63	20	67.4	2	25
BT50-ATC-28D	69.85	100	28	104.8	3	35

Usage:

- 1) Put the Taper to the machine Spindle
- 2) Install flange to the ATC arm
- 3) Insert Pin into the flange
- 4) Adjust ATC arm and make sure the pin front part into the flange completely.

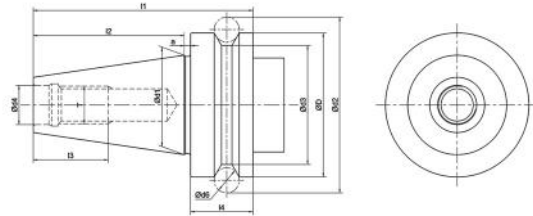
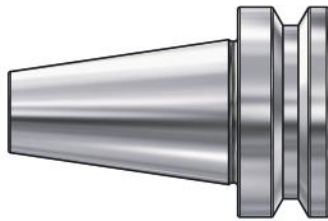


TOOL HOLDERS

NBT

NBT Taper Standard

NBT 锥柄标准



Size	D	d1	d2	d3	d4	d5	d6	l1	l2	l3	l4	a	T
NBT30	46	31.75	56.144	38	12.5	16.1	8	70.4	48.4	24	20	2	M12×1.75
NBT40	63	44.45	75.679	53	17	16.1	10	92.4	65.4	30	25	2	M16×2.0
NBT50	100	69.85	119.019	85	25	25.7	15	139.8	101.8	45	35	3	M24×3.0

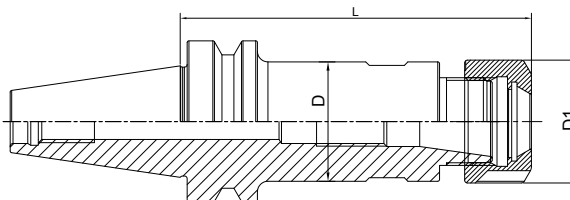
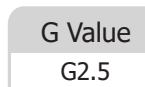
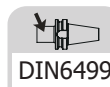
Material: Alloyed case hardened steel
Surface Treatment: Blackening and Bright
Taper tolerance: <AT3
Hardness: HRC 58-62
Carbon depth: 0.8±0.2mm
Surface Roughness: Ra<0.005mm
Balancing: G2.5/25000
Cooling: AD

NBT TOOLING SYSTEM NBT 工具系统

ER Collet Chuck.....	A.50
ER 弹簧夹头刀柄.....	A.50
GER Collet Chuck	A.51
GER 弹簧夹头刀柄.....	A.51
SKS Collet Chuck.....	A.52
SKS 高速筒夹刀柄.....	A.52



ER Collet Chuck ER 弹簧夹头刀柄

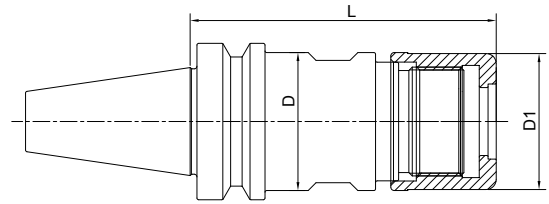


Size	D	D1	L	Capacity
NBT30-ER16A-60	28	60	1-10	28
NBT30-ER20A-60	34	60	1-13	34
NBT30-ER25-70	42	70	2-16	42
NBT30-ER32-70	50	70	2-20	50
NBT40-ER16A-70	28	70	1-10	28
NBT40-ER20A-70	34	70	1-13	34
NBT40-ER25-70	42	70	2-16	42
NBT40-ER32-70	50	70	2-20	50



High Speed SKS Collet Chuck
SKS 高速筒夹刀柄

A ↗ ≤0.003	G Value G6.3 G2.5	AD
---------------	----------------------	----



Size	D	D1	L	Capacity	M
NBT30-SKS10-60	27.5	27.1	60	3-10	M21.5*1.0
NBT30-SKS16-60	40.6	40	60	4-16	M32*1.5